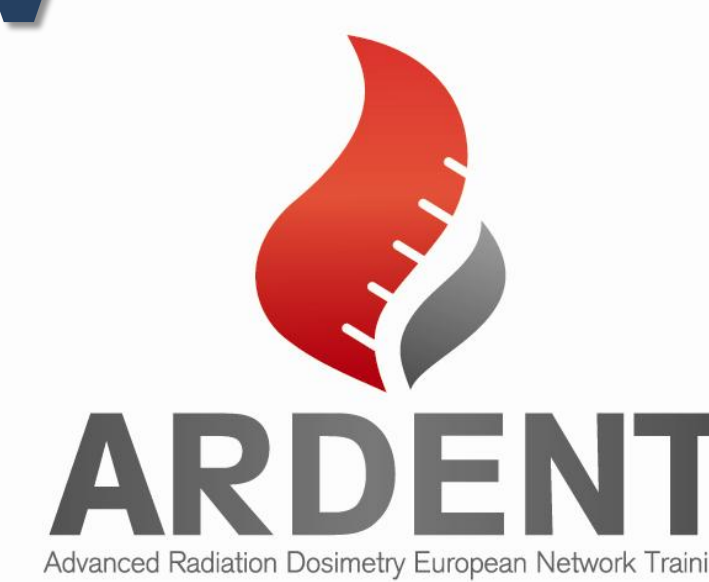




# In-beam LET Measurements of 1.3 GeV Carbon Ions for the Calibration of a PADC Neutron Track Dosimeter



M. Caresana<sup>1</sup>, A. Sashala Naik<sup>1,3</sup>, M. Ferrarini<sup>2</sup>, A. Paravincini<sup>3</sup>, M. Pullia<sup>2</sup>

<sup>1</sup>CeSNEF, Dipartimento di Energia, Politecnico di Milano, Italy

<sup>2</sup>Fondazione CNAO, Pavia, Italy

<sup>3</sup>Mi.Am SRL, Fabiano di Rivergaro, Italy



This research project has been partially supported by the Marie Curie Initial Training Network Fellowship of the European Community's Seventh Framework Programme under Grant Agreement PITN-GA-4 2011-289198-ARDENT

## 1) Introduction

Carbon ions are extensively used for high precision hadron-therapy for its ballistic properties and high relative biological effect (RBE). Due to the sharp Bragg peak, the dose can be deposited specifically to the targeted tumor cells[1], avoiding unwanted side-effects in the surrounding healthy tissue. In this study, the LET spectrum of the heavy ions along a beam of 1.3 GeV Carbon ions has been measured in stacks of 1.5 mm Intercast PADC detectors at the CNAO[2] facility. Using the LET<sub>nc</sub> spectrometry technique described in M. Caresana et al. [3], the track parameters have been used to measure the LET distributions of high-energy hadrons impinging on a stack of track detectors.

CR-39 stack

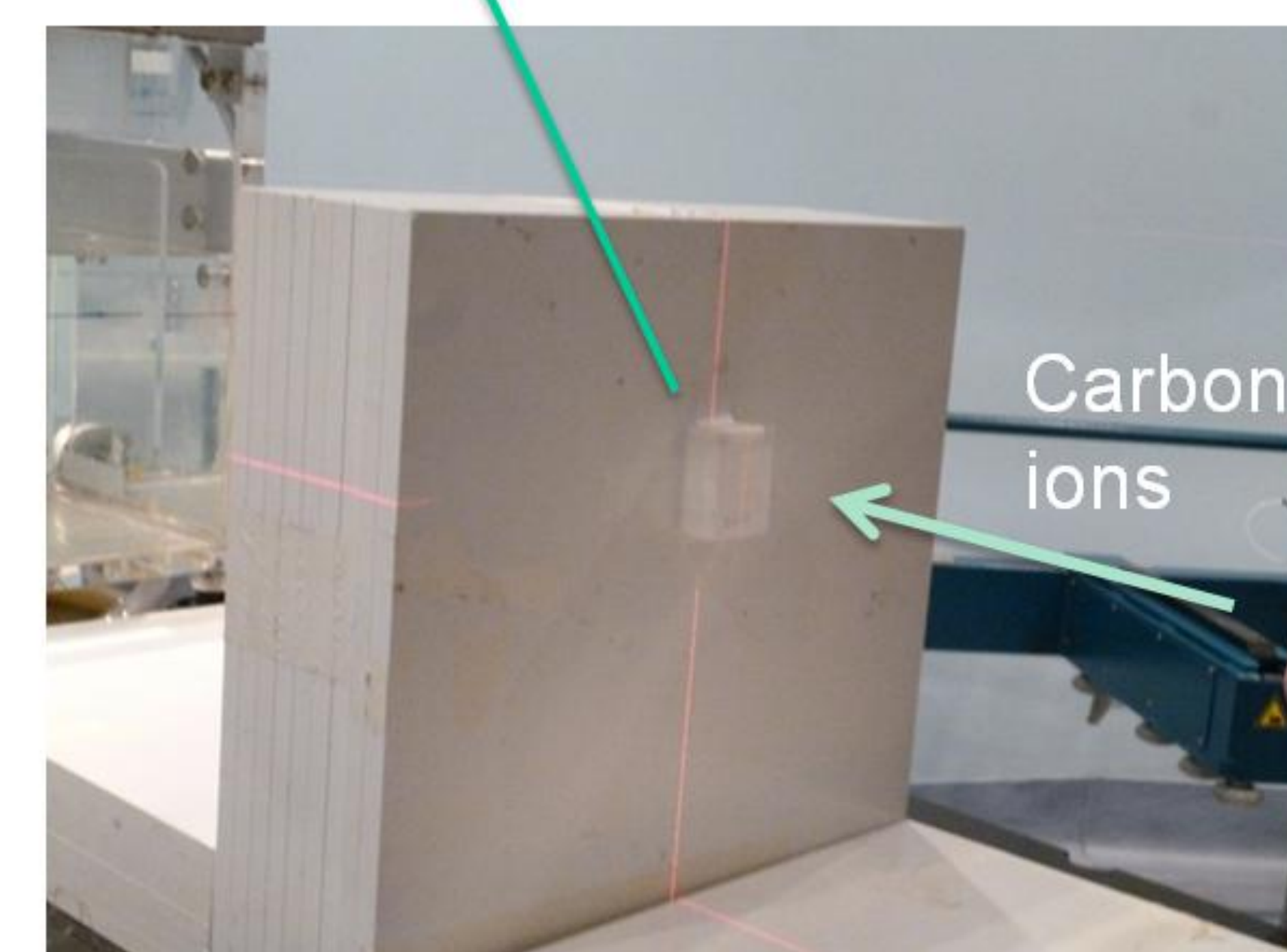


Figure 1. Stack of PADC detectors aligned in the 115.2 MeV/u Carbon ions' beam

## 2) LET spectrometry using PADC detectors

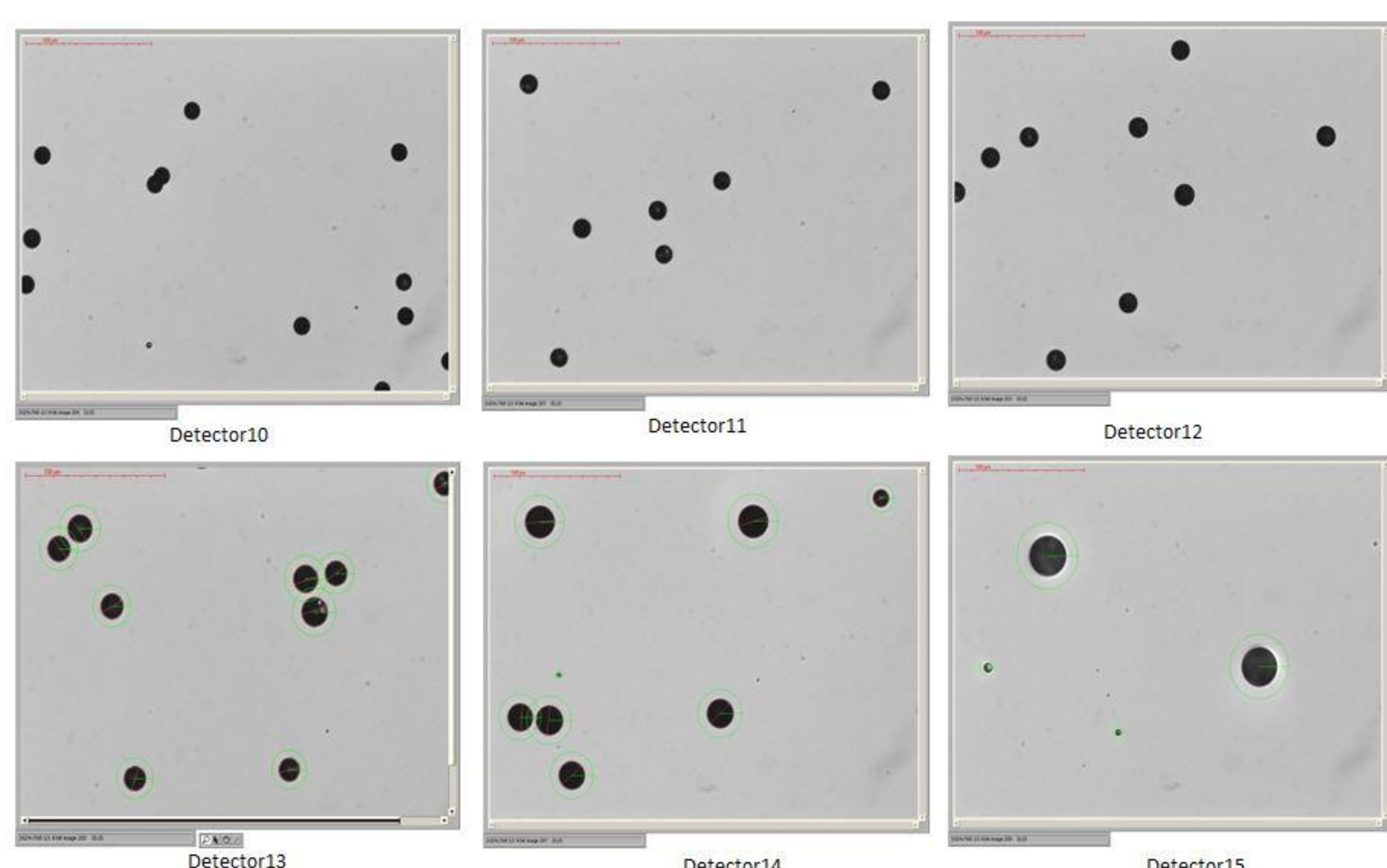


Figure 2. Tracks parameters and density variation along the beam until the Bragg peak in the tissue-equivalent PADC stack

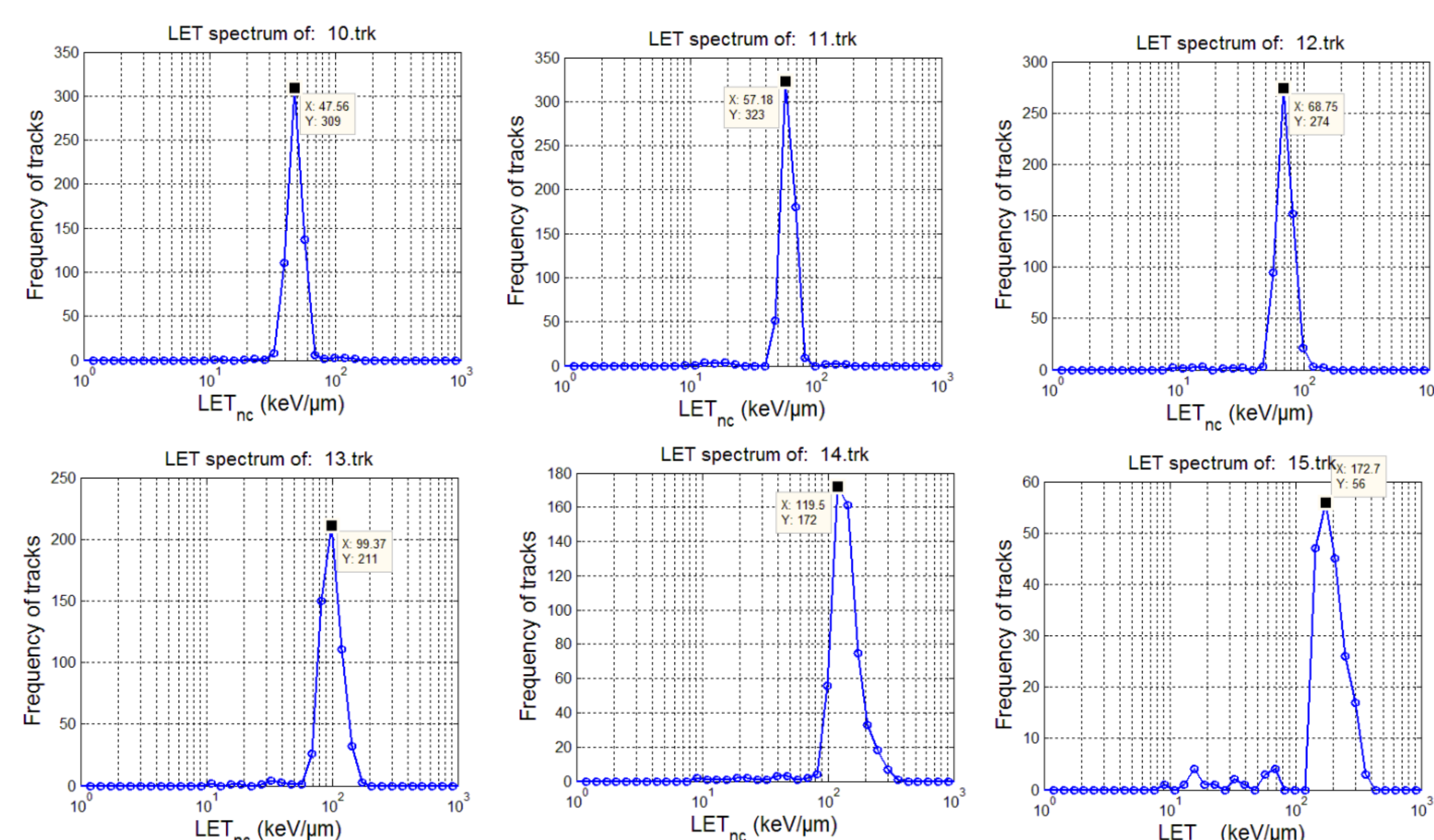


Figure 3. Illustration of the LET<sub>nc</sub> distributions calculated from the track parameters measured using the Politrack PADC reader [3]

## 3) Measurements compared to FLUKA

A stack of 16 detectors was placed in the 1.3 GeV Carbon beam. The LET<sub>nc</sub> [3] of the Carbon ions was measured until the Bragg peak and compared to the FLUKA code simulations. The comparison between the measured LET<sub>nc</sub> and the calculated LET is shown in figure 4.

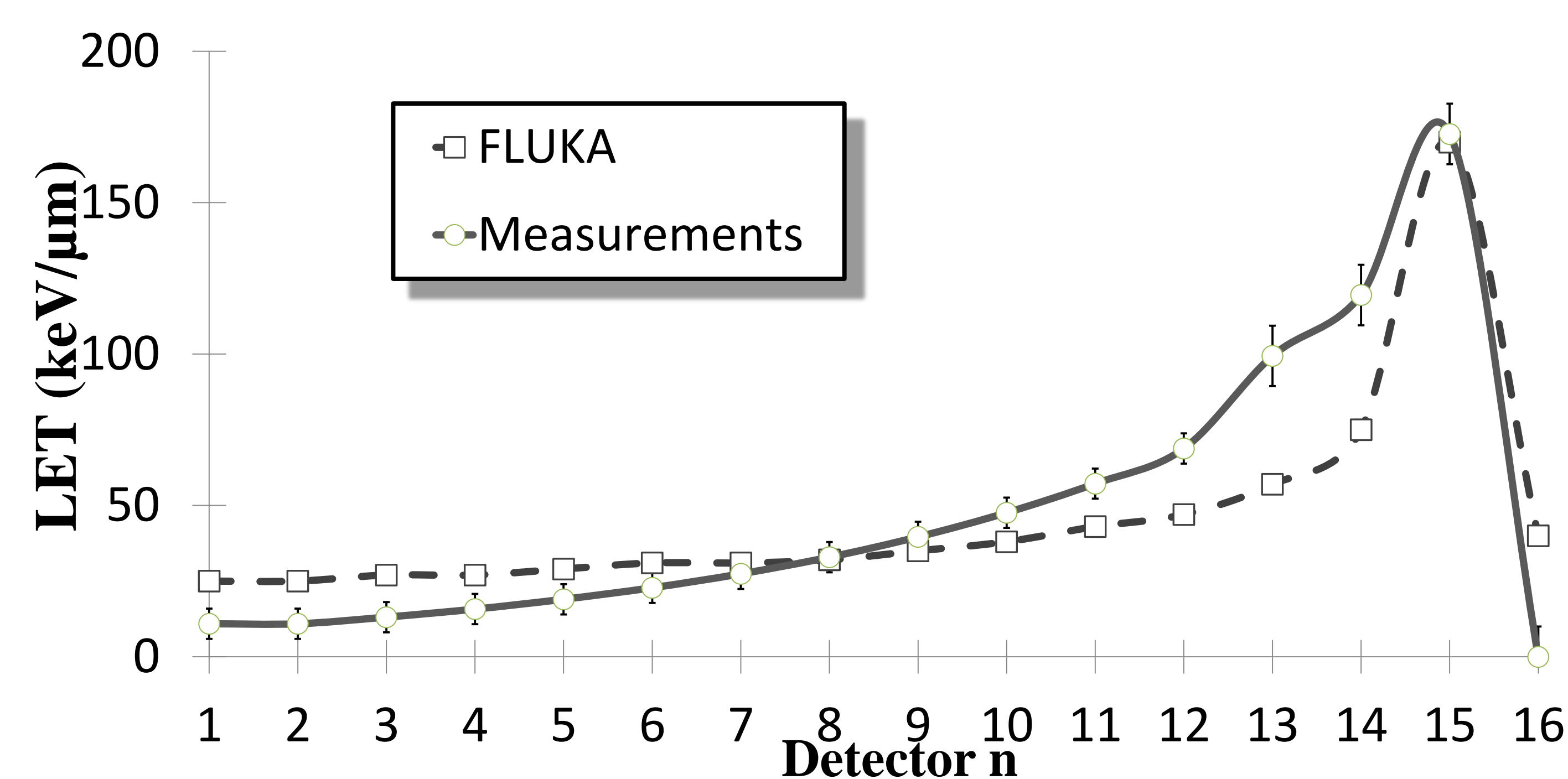


Figure 4. LET<sub>nc</sub> of Carbon ions measured in the experiments compared to the Carbon ions' LET calculated using the FLUKA code [5]

## 4) Conclusion

The results show that, for a carbon ion beam, the LET spectrometry along the beam using the LET<sub>nc</sub> method from M. Caresana et al. [3] show an overall acceptable agreement between measured and calculated LET. However, at some depths the agreement is not sufficiently good to evaluate a reliable dose response. Former research [4] shows that the response in terms of LET in the range 10 – 200 keV/μm gives good results with light particles (proton and alpha) but further investigations are needed as far as carbon ions are concerned.

## 5) References

- [1] W.T.T. Chu et al., IAEA proceedings, TECDOC-1560, 12 (2006).
- [2] R. Orecchia et al., Tumori, 95, 169-176 (2009)
- [3] M. Caresana et al., Nucl. Inst. and Methods in Physics Research, A683, 8-15 (2013)
- [4] M. Caresana et al., Radiation Measurements, 45, 183-189 (2010)
- [5] A. Ferrari, P.R. Sala, A. Fasso', and J. Ranft, "FLUKA: a multi-particle transport code", CERN-2005-10 (2005), INFN/TC\_05/11, SLAC-R-773